

# DOOR HARDWARE

## STOPS, TRACKS, GUIDES, HINGES



**Small Door Stop, Polyplas / Mill Finish**  
Available: Mill or Powder Coated Finish

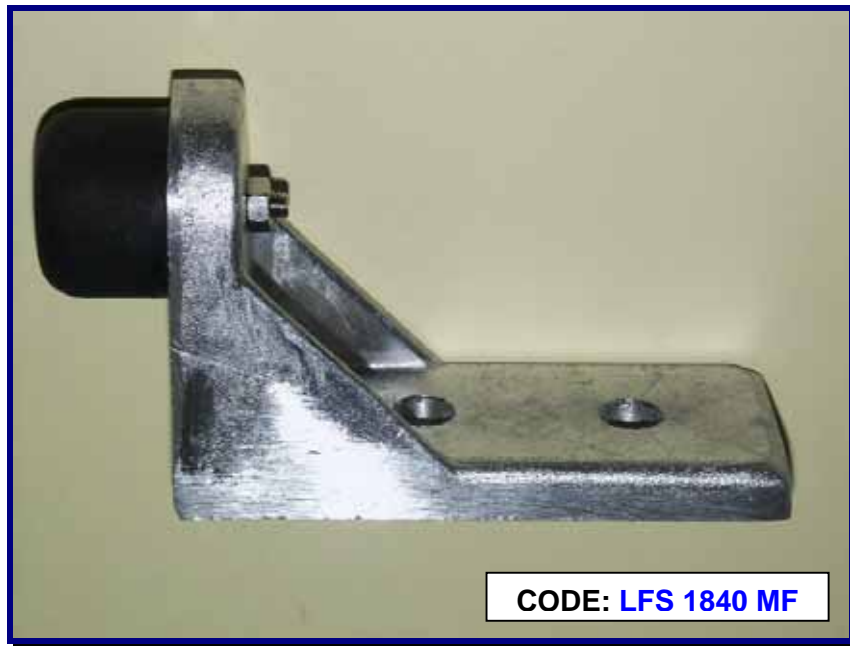


**Small Door Stop, Polyplas / Powder Coated**  
Available: Mill or Powder Coated Finish

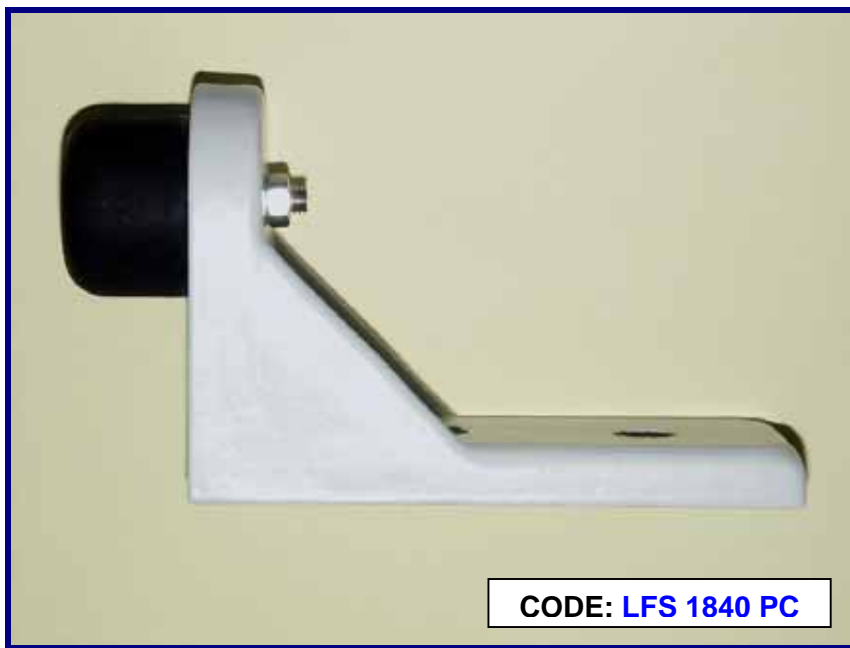
POLYPLAS  
POLYPLAS  
POLYPLAS

# DOOR HARDWARE

STOPS, TRACKS, GUIDES, HINGES



**Large Floor Stop, Polyplas / Mill Finish**  
Available: Mill or Powder Coated Finish



**Large Floor Stop, Polyplas / Powder Coated**  
Available: Mill or Powder Coated Finish

POLYPLAS PROPRIETARY LIMITED ACN 088 421 587 – ABN 33 088 421 587

Telephone: (03) 9720 0449 Facsimile: (03) 9720 0469

[www.polyplas.com.au](http://www.polyplas.com.au) [sales@polyplas.com.au](mailto:sales@polyplas.com.au)

# DOOR HARDWARE

## STOPS, TRACKS, GUIDES, HINGES



**Track Stop, Polyplas, Fixed Offset, Left Hand / Mill Finish**  
Available: Right or Left / Mill or Powder Coated Finish



**Track Stop, Polyplas, Fixed Offset, Right Hand / Powder Coated**  
Available: Right or Left / Mill or Powder Coated Finish

POLYPLAS PROPRIETARY LIMITED ACN 088 421 587 – ABN 33 088 421 587

Telephone: (03) 9720 0449 Facsimile: (03) 9720 0469

[www.polyplas.com.au](http://www.polyplas.com.au) [sales@polyplas.com.au](mailto:sales@polyplas.com.au)

# DOOR HARDWARE

## STOPS, TRACKS, GUIDES, HINGES



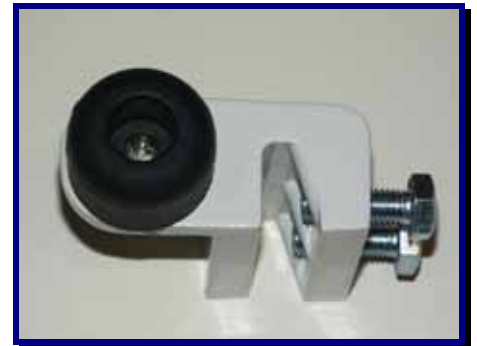
**Track Stop, Polyplas, Inline Adjustable, Left Hand  
/ Mill Finish**  
Available: Right or Left / Mill or Powder Coated Finish



CODE: **ILTS 2050 MF**



**Track Stop, Polyplas, Inline Adjustable, Right Hand  
/ Powder Coated**  
Available: Right or Left / Mill or Powder Coated Finish



CODE: **ILTS 2050 PC**

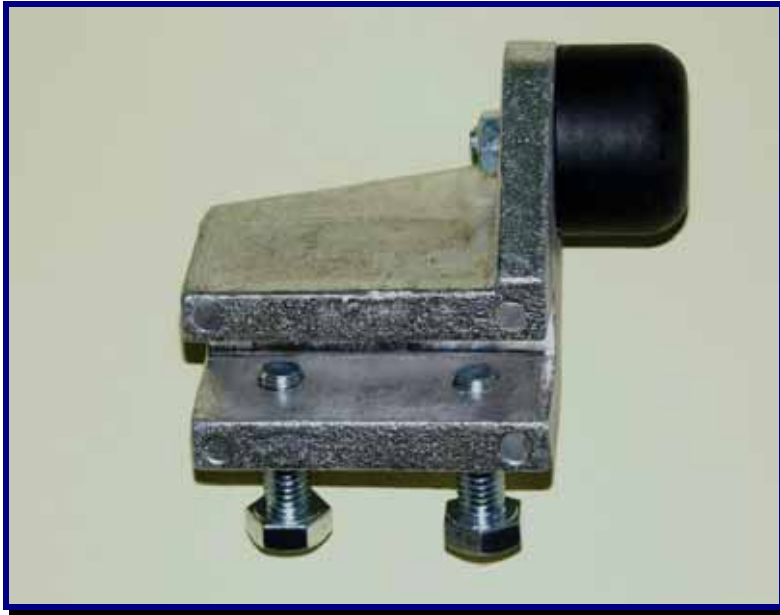
POLYPLAS PROPRIETARY LIMITED ACN 088 421 587 – ABN 33 088 421 587

Telephone: (03) 9720 0449 Facsimile: (03) 9720 0469

[www.polyplas.com.au](http://www.polyplas.com.au) [sales@polyplas.com.au](mailto:sales@polyplas.com.au)

# DOOR HARDWARE

## STOPS, TRACKS, GUIDES, HINGES



**Track Stop, Polyplas, Offset Adjustable, Left Hand  
/ Mill Finish**  
Available: Right or Left / Mill or Powder Coated Finish



CODE: **OFTS 2040 MF**



**Track Stop, Polyplas, Offset Adjustable, Right Hand  
/ Powder Coated**  
Available: Right or Left / Mill or Powder Coated Finish



CODE: **OFTS 2040 PC**

# DOOR HARDWARE

## STOPS, TRACKS, GUIDES, HINGES



**Floor Guide, Polyplas, H-Type / Galvanised**  
Available: Galvanised, Powder Coated or Stainless Steel Finish



**Floor Guide, Polyplas, H-Type / Powder Coated**  
Available: Galvanised, Powder Coated or Stainless Steel Finish

POLYPLAS  
POLYPLAS  
POLYPLAS

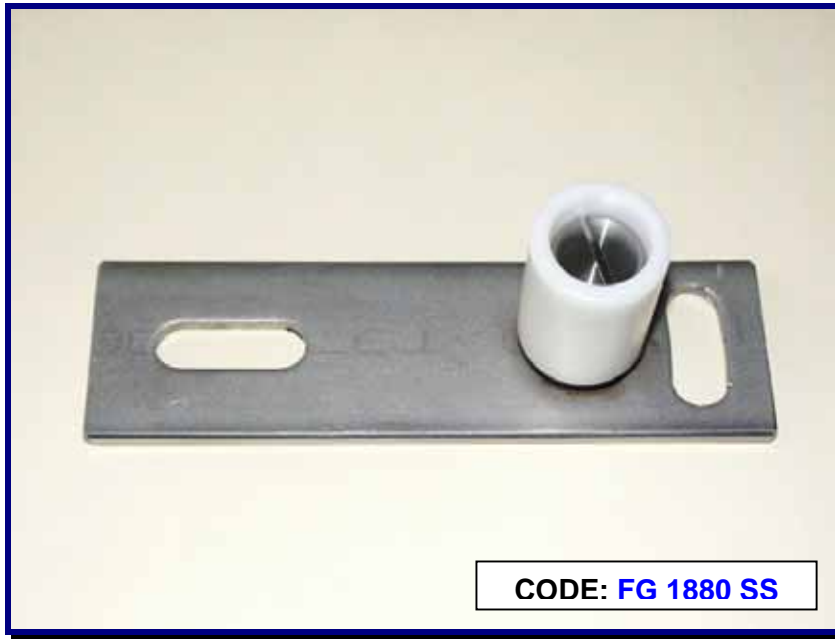
POLYPLAS PROPRIETARY LIMITED ACN 088 421 587 – ABN 33 088 421 587

Telephone: (03) 9720 0449 Facsimile: (03) 9720 0469

[www.polyplas.com.au](http://www.polyplas.com.au) [sales@polyplas.com.au](mailto:sales@polyplas.com.au)

# DOOR HARDWARE

## STOPS, TRACKS, GUIDES, HINGES



**Floor Guide, Polyplas, H-Type / Stainless Steel**  
Available: Galvanised, Powder Coated or Stainless Steel Finish



**Floor Guide, Polyplas / Stainless Steel**

POLYPLAS PROPRIETARY LIMITED ACN 088 421 587 – ABN 33 088 421 587

Telephone: (03) 9720 0449 Facsimile: (03) 9720 0469

[www.polyplas.com.au](http://www.polyplas.com.au) [sales@polyplas.com.au](mailto:sales@polyplas.com.au)

# DOOR HARDWARE

STOPS, TRACKS, GUIDES, HINGES



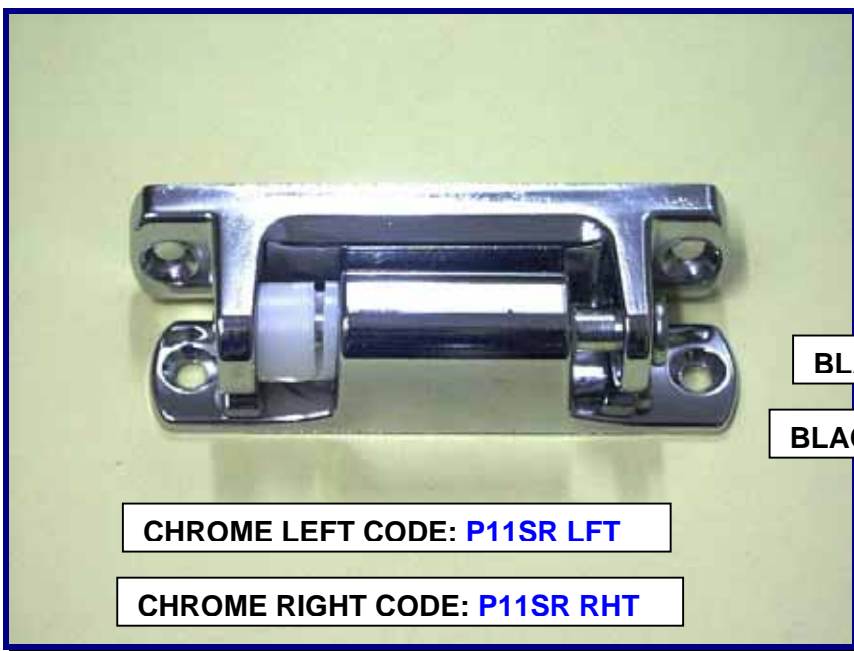
Floor Guide, Setup Kit



Hirline Hinge, Stainless Steel

# DOOR HARDWARE

STOPS, TRACKS, GUIDES, HINGES



CHROME LEFT CODE: **P11SR LFT**

CHROME RIGHT CODE: **P11SR RHT**



BLACK LEFT CODE: **P11SR BK LFT**

BLACK RIGHT CODE: **P11SR BK RHT**

Door Hinge, P11/Self Rising, Chrome or Black Finish  
Available: Left or Right



CODE: **P11 SRP**

Packer / Spacer, Suit P11 Door Hinge

POLYPLAS PROPRIETARY LIMITED ACN 088 421 587 – ABN 33 088 421 587

Telephone: (03) 9720 0449 Facsimile: (03) 9720 0469

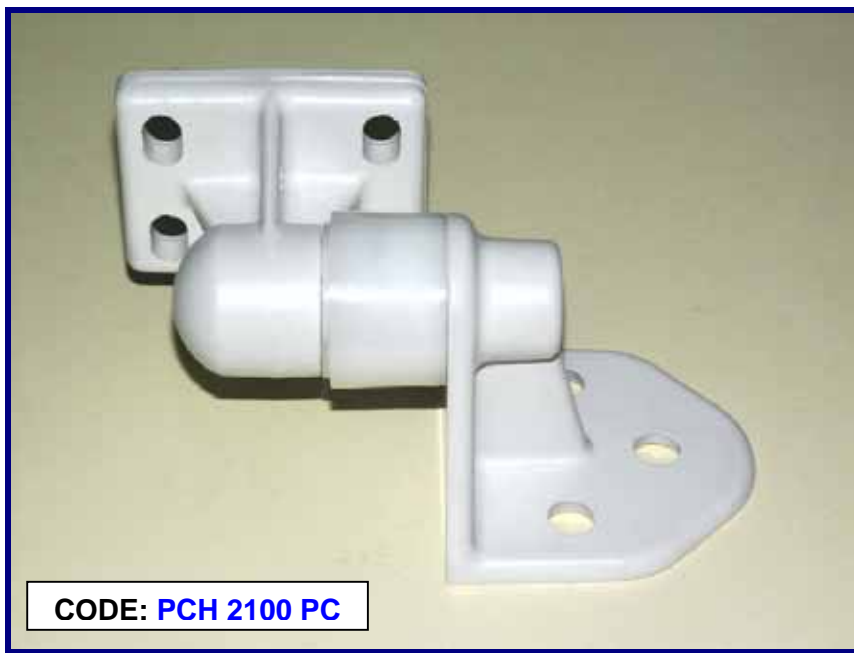
www.polyplas.com.au sales@polyplas.com.au

# DOOR HARDWARE

STOPS, TRACKS, GUIDES, HINGES



Door Hinge, Poly-Cam, Polyplas, (Works as Left or Right) / Mill Finish  
Available: Mill or Powder Coated Finish



Door Hinge, Poly-Cam, Polyplas, (Works as Left or Right) / Powder Coated  
Available: Mill or Powder Coated Finish

POLYPLAS PROPRIETARY LIMITED ACN 088 421 587 – ABN 33 088 421 587

Telephone: (03) 9720 0449 Facsimile: (03) 9720 0469

[www.polyplas.com.au](http://www.polyplas.com.au) [sales@polyplas.com.au](mailto:sales@polyplas.com.au)

POLYPLAS  
POLYPLAS  
POLYPLAS

# DOOR HARDWARE

## STOPS, TRACKS, GUIDES, HINGES



**Cone & Cone Locator Set, Polyplas (Cone Locator / Hot Dip Gal & Cone / Mill Finish)**

Available: Locator: S/S or Gal., Cone: Mill or Powder Coated Finish



**Cone & Cone Locator Set, Polyplas (Cone Locator / Stainless Steel & Cone / Powder Coated)**

Available: Locator: S/S or Gal., Cone: Mill or Powder Coated Finish

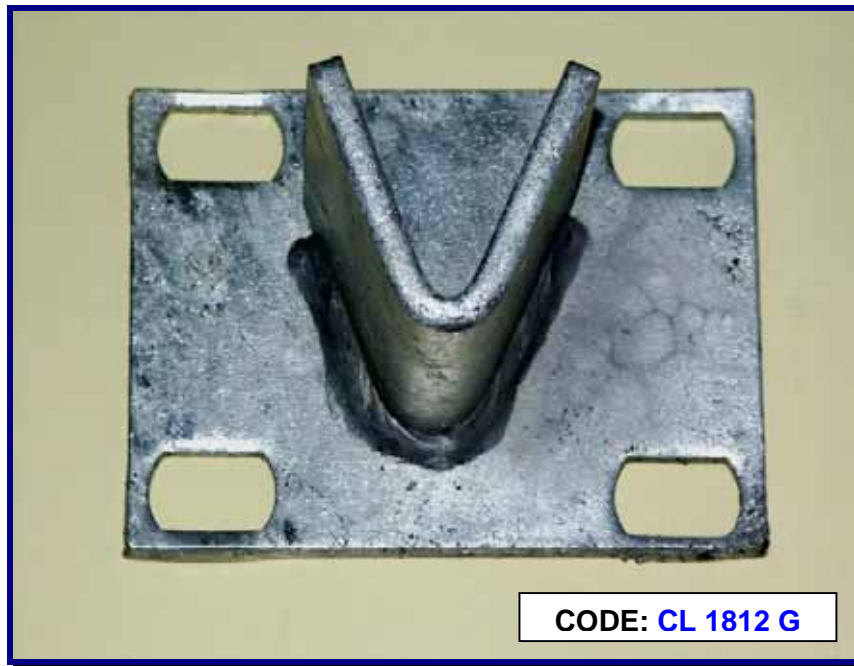
POLYPLAS PROPRIETARY LIMITED ACN 088 421 587 – ABN 33 088 421 587

Telephone: (03) 9720 0449 Facsimile: (03) 9720 0469

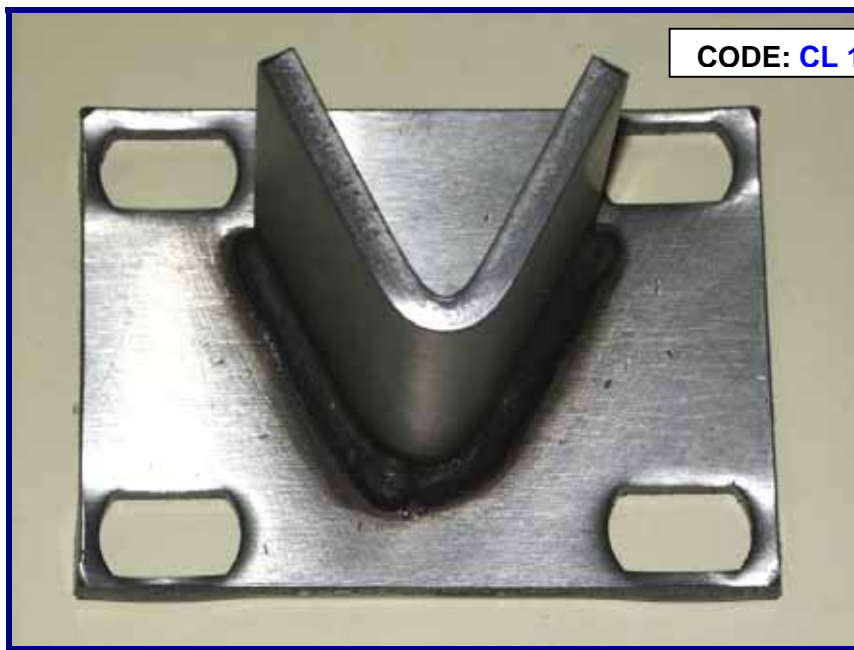
[www.polyplas.com.au](http://www.polyplas.com.au) [sales@polyplas.com.au](mailto:sales@polyplas.com.au)

# DOOR HARDWARE

STOPS, TRACKS, GUIDES, HINGES



**Cone Locater, Polyplas / Galvanised**  
Available: Galvanised or Stainless Steel



**Cone Locater, Polyplas / Stainless Steel**  
Available: Galvanised or Stainless Steel

POLYPLAS PROPRIETARY LIMITED ACN 088 421 587 – ABN 33 088 421 587  
Telephone: (03) 9720 0449 Facsimile: (03) 9720 0469  
[www.polyplas.com.au](http://www.polyplas.com.au) [sales@polyplas.com.au](mailto:sales@polyplas.com.au)

# DOOR HARDWARE

STOPS, TRACKS, GUIDES, HINGES



**Cone, Polyplas / Mill Finish**  
Available: Mill or Powder Coated Finish



**Cone, Polyplas / Powder Coated**  
Available: Mill or Powder Coated Finish

POLYPLAS PROPRIETARY LIMITED ACN 088 421 587 – ABN 33 088 421 587

Telephone: (03) 9720 0449 Facsimile: (03) 9720 0469

[www.polyplas.com.au](http://www.polyplas.com.au) [sales@polyplas.com.au](mailto:sales@polyplas.com.au)

# DOOR HARDWARE

STOPS, TRACKS, GUIDES, HINGES



CODE: **BCLF**

**Cone Locator, BonDor / Galvanised**



CODE: **BCLM**

**Cone, BonDor / Galvanised**

POLYPLAS POLYPLAS

POLYPLAS PROPRIETARY LIMITED ACN 088 421 587 – ABN 33 088 421 587

Telephone: (03) 9720 0449 Facsimile: (03) 9720 0469

www.polyplas.com.au sales@polyplas.com.au

# DOOR HARDWARE

STOPS, TRACKS, GUIDES, HINGES



Rubber Stop, Polyplas / Black



Rubber Stop, Polyplas Large  
Available: Black or White

POLYPLAS  
POLYPLAS

POLYPLAS PROPRIETARY LIMITED ACN 088 421 587 – ABN 33 088 421 587  
Telephone: (03) 9720 0449 Facsimile: (03) 9720 0469  
www.polyplas.com.au sales@polyplas.com.au

# DOOR HARDWARE

STOPS, TRACKS, GUIDES, HINGES



**M6 Screw & Nut, Stainless Steel, Pan Head Phillips Drive**

Available: M6 x 25mm & M6 x 30mm

POLYPLAS  
POLYPLAS  
POLYPLAS

POLYPLAS PROPRIETARY LIMITED ACN 088 421 587 – ABN 33 088 421 587

Telephone: (03) 9720 0449 Facsimile: (03) 9720 0469

[www.polyplas.com.au](http://www.polyplas.com.au) [sales@polyplas.com.au](mailto:sales@polyplas.com.au)